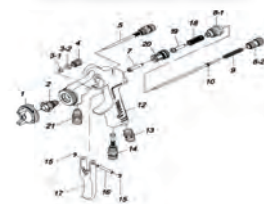


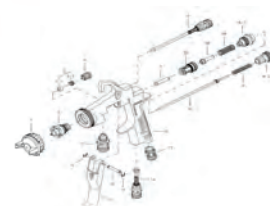
# PISTOLE PER POMPE BASSA PRESSIONE



**UGELLO E ASTINA  
IN ACCIAIO INOX**



**SPACCATO COMPLETO  
RICAMBI VS503**  
Pag. 288



**SPACCATO COMPLETO  
RICAMBI VS603**  
Pag. 287

**RICAMBI  
STANDARD:**



**Kit UGELLO VS503**  
Cod. VS5P1001XX



**Kit UGELLO VS603**  
Cod. VS6P2001XX

## AEROGRAFO MANUALE VS 603

| CODICE   | UGELLO FLUIDO<br>Ø MM | UGELLO ARIA | PRESSIONE<br>BAR | CONSUMO ARIA<br>LT/MIN | EMISSIONE<br>FLUIDO ML/MIN | VENTAGLIO<br>+-20 MM | PREZZO |
|----------|-----------------------|-------------|------------------|------------------------|----------------------------|----------------------|--------|
| VS60312V | 1.2                   | VLSVB2      | 2.5              | 370                    | 290                        | 400                  |        |
| VS60312G | 1.2                   | VGS2BP      | 2.5              | 560                    | 400                        | 400                  |        |
| VS60315  | 1.5                   | VKS2B       | 2.5              | 330                    | 340                        | 290                  |        |
| VS60318  | 1.8                   | VKS2B       | 2.5              | 290                    | 290                        | 340                  |        |
| VS60320  | 2.0                   | VRS2B       | 2.5              | 360                    | 350                        | 290                  |        |
| VS60325  | 2.5                   | VWS2B       | 2.5              | 360                    | 440                        | 280                  |        |

## AEROGRAFO MANUALE VS 503

| CODICE  | UGELLO FLUIDO<br>Ø MM | UGELLO ARIA | PRESSIONE<br>BAR | CONSUMO ARIA<br>LT/MIN | EMISSIONE<br>FLUIDO ML/MIN | VENTAGLIO<br>+-20 MM | PREZZO |
|---------|-----------------------|-------------|------------------|------------------------|----------------------------|----------------------|--------|
| VS50308 | 0.8                   | VES2P       | 2.5              | 270                    | 150                        | 190                  |        |
| VS50310 | 1.0                   | VES2P       | 2.5              | 270                    | 200                        | 220                  |        |
| VS50313 | 1.3                   | VES2P       | 2.5              | 220                    | 200                        | 210                  |        |
| VS50315 | 1.5                   | VHS2B       | 2.5              | 225                    | 170                        | 175                  |        |
| VS50318 | 1.8                   | VNS2B       | 2.5              | 110                    | 210                        | 170                  |        |